

Integra® Miltex®

Dental Surgical Instruments

Limit uncertainty with
the brand you trust



INTEGRA®
LIMIT UNCERTAINTY

General Instruments

Scissors

Our razor sharp scissors are available in a variety of designs in both ring handle and Castroviejo patterns. From cutting tissue to removing sutures to performing precision procedures, Miltex is recognized for delivering consistent cutting performance and durability.

Needle Holders

A close examination of Miltex Needle Holders, either standard or tungsten carbide, will reveal crafted surgical tools that will perform as intended. Smoothly beveled box locks and jaw edges help protect suture material from snags or cutting. The jaw surface is milled to help ensure a secure grasp and to help prevent needle slippage or rotation.

Hemostats

Our hemostats are designed for use in a variety of clinical dental procedures from the routine to the most delicate. Miltex is dedicated to providing customers with a variety of instruments with just the right feel and performance. Available in a variety of styles and manufactured from quality stainless steel to exacting specifications, our hemostats demonstrate that Miltex is dedicated to providing you with the right instrument.

Tissue and Dressing Forceps

Tissue and dressing forceps are designed to help handle the most delicate procedures as well as routine surgical tasks. We offer a comprehensive line of versatile tissue and dressing forceps to handle a variety of needs.



Scissors

Iris

- All purpose scissors
- Straight and curved patterns available
- SuperCut and Tungsten Carbide patterns available



5-306

Kelly

- Available with one smooth blade and one serrated blade
- All purpose scissors
- Straight and curved patterns available



5-252

Stitch

- Straight and curved patterns available
- Wide range of lengths available
- Notched blade on the Spencer, Stitch and Littauer scissors helps lift suture for easy cutting



9-102

	Reference	Description
Iris	5-300	Iris Scissors 4" Straight
	5-302	Iris Scissors 4" Curved
	5D-303	Iris Operating Scissors 4½" Curved sideways
	5-304	Iris Scissors 4½" Straight
	5-304TC*	Iris Scissors 4½" Straight, Tungsten Carbide
	5-SC-304**	Iris Scissors 4½" Straight, SuperCut
	5-306	Iris Scissors 4½" Curved
	5-306TC*	Iris Scissors 4½" Curved, Tungsten Carbide
	5-SC-306**	Iris Scissors 4½" Curved, SuperCut
	5-308	Iris Scissors 4½" Angled on side
	18-1396	Iris Scissors 3½" Straight, with 20 mm blades, delicate
	18-1398	Iris Scissors 3½" Curved, with 20 mm blades, delicate



5-SC-306**



5D-251

Kelly	5-250	Kelly Fistula Scissors 6¼" Straight, sharp points
	5D-251	Kelly Scissors 6¼" Straight, sharp points, one serrated blade
	5-252	Kelly Fistula Scissors 6¼" Curved, sharp points
	5D-253	Kelly Scissors 6¼" Sharp points, curved, one serrated blade
	5-254	Kelly Fistula Scissors 6¼" Sharp points, angled on side
	5D-255	Kelly Scissors 6¼" Sharp points, angular, one serrated blade



9-108

Stitch	9-100	Spencer Stitch Scissors 3½", Delicate
	9-108	Stitch Scissors 4½" Angled, Delicate
	9-102	Littauer Stitch Scissors 4¾", Light pattern
	9-104	Littauer Stitch Scissors 5½", Standard pattern
	9-110	O'Brien Stitch Scissors 3¾" Angled, sharp points
	9-115	Reeh Stitch Scissors 3⅞" Sharp tips, small hook, one serrated blade
	9-116	Miltex Stitch Scissors 3¾" Curved, sharp pointed tips
	9-117	Miltex Stitch Scissors 4¼" Curved, sharp pointed tips



5-320TC*

Other	5-264	Dean Dissecting Scissors 6¾" Angled on flat, one serrated blade
	5-320	Goldman-Fox Wound Scissors 5" Curved fine tips, one serrated blade
	5-320TC*	Goldman-Fox Wound Scissors 5" Curved fine tips, one serrated blade, tungsten carbide
	5D-322	Goldman-Fox Wound Scissors 5" Curved, one serrated blade, angled
	5D-324	La Grange Scissors 4¼" Curved, Angled, one serrated blade



5D-324

*Premium all purpose scissors with tungsten carbide inserts

**Premium tissue only scissors with razor-sharp upper blade and serrated lower blade

Scissors

Crown and Collar

Reference	Description
9D-115	Scissors, Wire Cutting 4¼" Right Angle, one serrated blade
9D-118	Scissors, Crown Pede 3½" Festooning
9-120	Wire Cutting Scissors 4¾" Straight, one serrated blade
9D-121	Wire Cutting Scissors 4¾" Straight
9D-132	Wire Cutting Scissors 4¼" Straight, one serrated blade
9D-133	Wire Cutting Scissors 4¼" Straight, one serrated blade
9D-134	Wire Cutting Scissors 4¼" Curved, one serrated blade
9D-135	Wire Cutting Scissors 4¼" Curved



Needle Holders

Standard (STD)

Our needle holders are made from quality German stainless steel, which ensures a quality product.



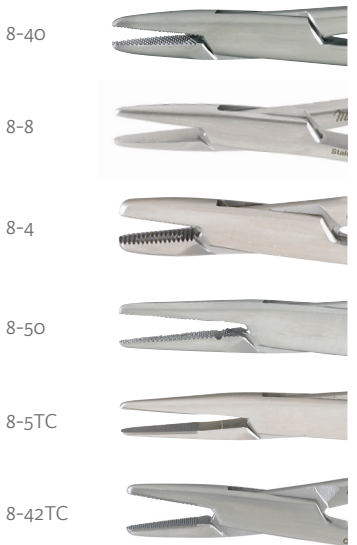
Tungsten Carbide (TC)

Tungsten carbide needle holders offer longer wear and grasping power to help prevent needle slippage.



Reference (STD)	Reference (TC)	Description
8-40	8-40TC	Baumgartner Needle Holder 5½"
8-8	8-8TC	Halsey Needle Holder 5", smooth
-	8-8A-TC	Halsey Needle Holder 5", serrated
8-4	8-4TC	Derf Needle Holder 4¾"
8-50	8-50TC	Crile-Wood Needle Holder 6"
-	8-3TC	PAR Needle Holder 4½", delicate serrated jaws
-	8-5TC	PAR Needle Holder 5", delicate serrated jaws
8-28	8-28TC	MATHIEU Needle Holder 5½", spring handles
8-30	8-30TC	MATHIEU Needle Holder 6¼", spring handles
8-42	8-42TC	Mayo-Hegar Needle Holder 5"
8-44	8-44TC	Mayo-Hegar Needle Holder 6¼"
8-46	8-46TC	Mayo-Hegar Needle Holder 7¼"
8-15	8-15TC	Olsen-Hegar Needle Holder 5½", serrated
8-16	8-16TC	Olsen-Hegar Needle Holder 6½", serrated

*Integra Miltex can replace tungsten carbide inserts



Olsen-Hegar Needle Holders are available in a combination pattern with suture scissors.

8-16



Hemostats

Standard (STD)

Reference (STD)	Description
7-4	Halsted Mosquito Forceps 5" Curved
7-2	Halsted Mosquito Forceps 5" Straight
7-20	Halsted Mosquito Forceps 4½" Angled 45° on flat, Extra Delicate
7-26	Hartman Mosquito Forceps 4" Curved
7-24	Hartman Mosquito Forceps 4" Straight
7-38	Kelly Forceps 5½" Curved
7-36	Kelly Forceps 5½" Straight

7-4



7-20



7-26



7-38



Tissue and Dressing Forceps

Standard (STD)

Reference (STD)	Description
6-118	Adson Dressing Forceps 4¾" (serrated)
6-120	Adson Tissue Forceps 4¾" (1x2)
6-121	Adson Tissue Forceps 4¾" (1x2 and cross serrated)
6-123	Adson Tissue & Suture Forceps 4¾" (1x2 with tying platform)
6-124	Brown-Adson Tissue Forceps 4¾" (7x7 side grasping)
6-112	Hudson Dressing Forceps 4¾" (serrated)
6-114	Hudson Tissue Forceps 4¾" (1x2)
6-4	Dressing Forceps 4½" (serrated)
6-6	Dressing Forceps 5" (serrated)
6-8	Dressing Forceps 5½" (serrated)
6-10	Dressing Forceps 6" (serrated)
6-40	Tissue Forceps 4½" (1x2, serrated)
6-42	Tissue Forceps 5" (1x2, serrated)
6-44	Tissue Forceps 5½" (1x2, serrated)
6-104	Semken Dressing Forceps 5" (serrated)

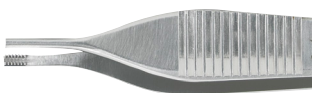
6-118



6-123



6-124



6-4



6-40



6-104



Availability of these products might vary from a given country or region to another, as a result of specific local regulatory approval or clearance requirements for sale in such country or region.

- Non contractual document. The manufacturer reserves the right, without prior notice, to modify the products in order to improve their quality.
- Warning: Applicable laws restrict these products to sale by or on the order of a physician.
- Consult product labels and inserts for any indication, contraindications, hazards, warnings, precautions, and instructions for use.

For more information or to place an order, please contact:

United States, Canada, Asia, Pacific, Latin America

USA 800-654-2873 ▪ 888-980-7742 fax

International +1 609-936-5400 ▪ +1 609-750-4259 fax

integralife.com/contact

